

# BAYCARE HEALTH SYSTEM

- BayCare is a leading not-for-profit health care system that connects individuals and families to a wide range of services at 15 hospitals and hundreds of other convenient locations throughout the Tampa Bay and West Central Florida regions. BayCare also is one of the largest private employers in the area with an estimated \$6.62 billion in annual impact on the region and state.



# ABOUT US

**\$4 Billion**

- Revenue

**27,600**

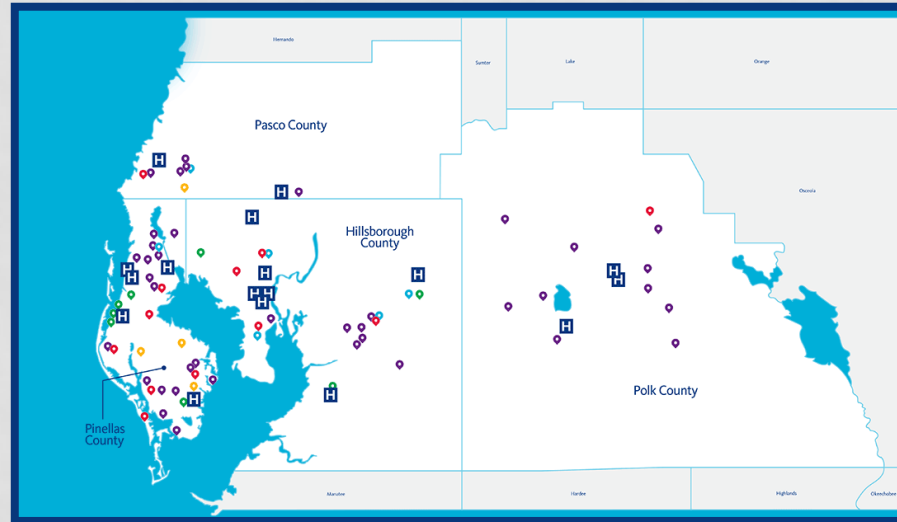
- Team Members

**36%**

- Market Share

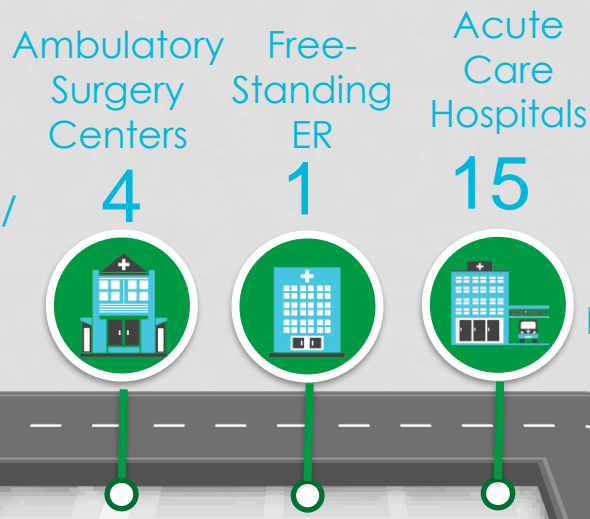
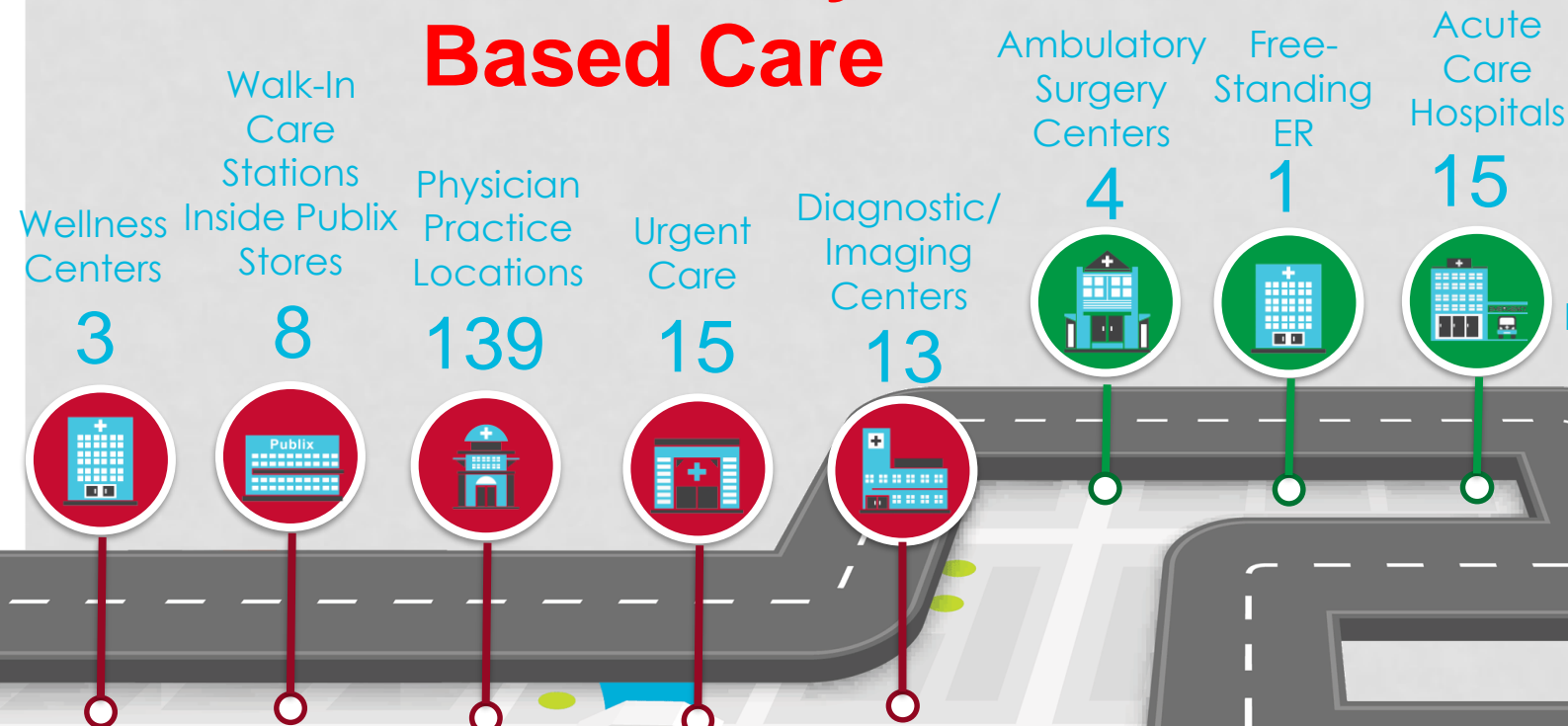
**AA<sub>2</sub>**

- Credit Rating

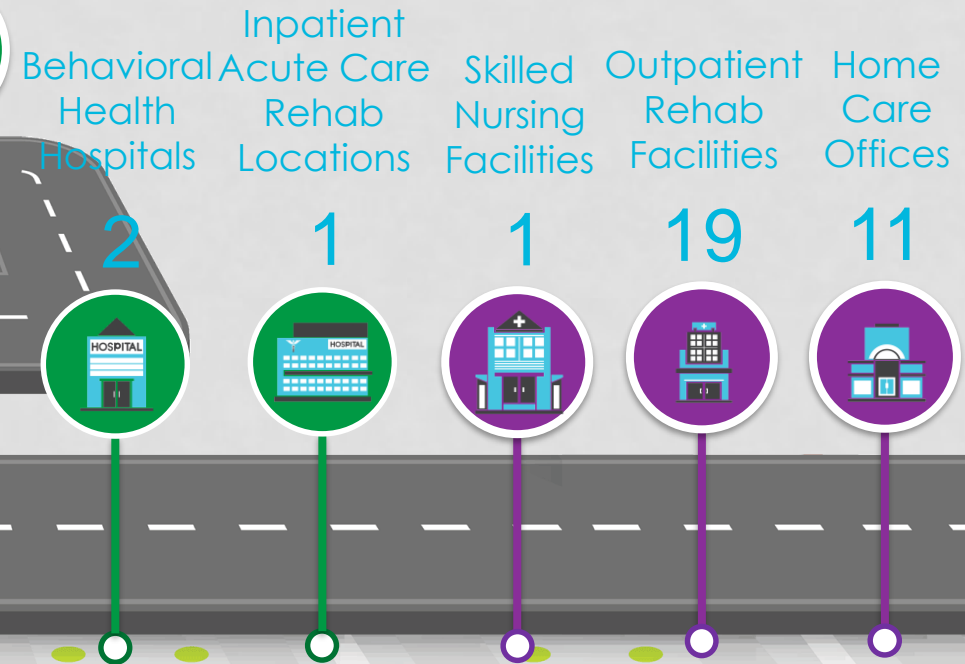


# FOCUSED ON ENTIRE CARE CONTINUUM

## Community-Based Care



## Acute Care



# BY THE NUMBERS - 2017



Team Members

**27,600**



ER Visits

**675,645**



**858,576**

HomeCare  
Visits

**3,459**

Beds\*\*



**5,240**

Physicians and  
Medical  
professionals\*

**\$3.9 billion** Operating  
Revenue



**\$391**  
million

Community Benefit\*\*

Outpatient  
Surgeries



**63,165**

**380**

Locations In 4  
Counties



**15,065**

Births

**176,228**

Discharges



\*Includes employed, credentialed and community-based physicians, and medical professionals (PAs, ARNPs, CRNAs, etc.)  
\*\*Represents unreimbursed costs for traditional charity care, Medicaid and other means-tested programs and unbilled community services  
\*\*\* Includes beds at St. Joseph's Hospital Behavioral Health Center and Morton Plant North Bay Hospital Recovery Center

# OUR NETWORK AND HOSPITALS

## Our Network

BayCare Behavioral  
Health

BayCare HomeCare

BayCare Laboratories

BayCare Medical Group

BayCare Outpatient  
Imaging

BayCare Surgery Centers

BayCare Urgent Care

## Our Hospitals

Mease Countryside Hospital  
Founded 1985 - 311 beds

Mease Dunedin Hospital  
Founded 1937 - 120 beds

Morton Plant Hospital  
Founded 1916 - 613 beds

Morton Plant North Bay Hospital  
Founded 1965 - 150 beds

St. Anthony's Hospital  
Founded 1931 - 393 beds

St. Joseph's Hospital  
Founded 1934 - 465 beds

St. Joseph's Children's Hospital  
Founded 1990 - 207 beds

St. Joseph's Women's Hospital  
Founded 1976 - 108 beds

St. Joseph's Hospital-North  
Founded 2010 - 108 beds

St. Joseph's Hospital-South  
Founded 2015 - 114 beds

South Florida Baptist Hospital  
Founded 1953 - 147 beds

Winter Haven Hospital  
Founded 1926 - 458 beds

Winter Haven Women's Hospital  
Founded 1987 - 61 beds

Bartow Regional Medical Center  
Founded 1925 - 72 beds

BayCare Alliant Hospital  
Founded 2008 - 48 beds

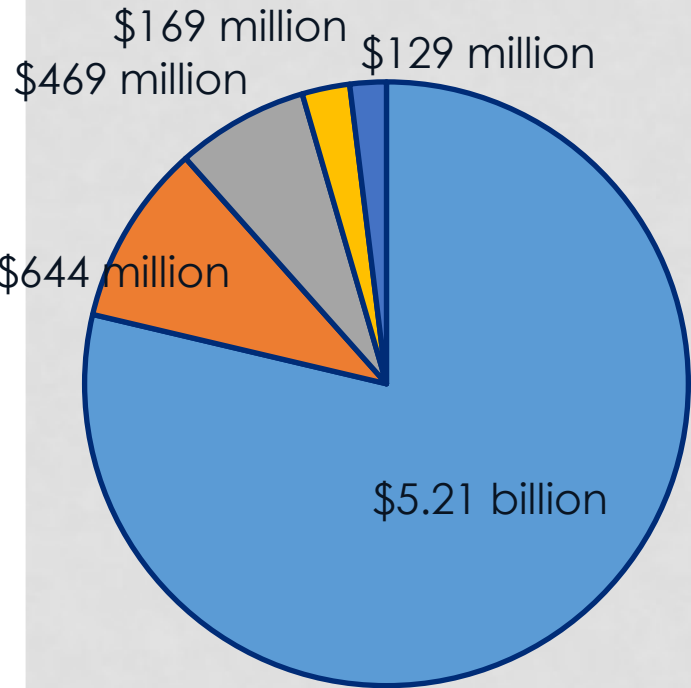
# BAYCARE'S ECONOMIC IMPACT



Economic Impact  
**\$6.62 billion**

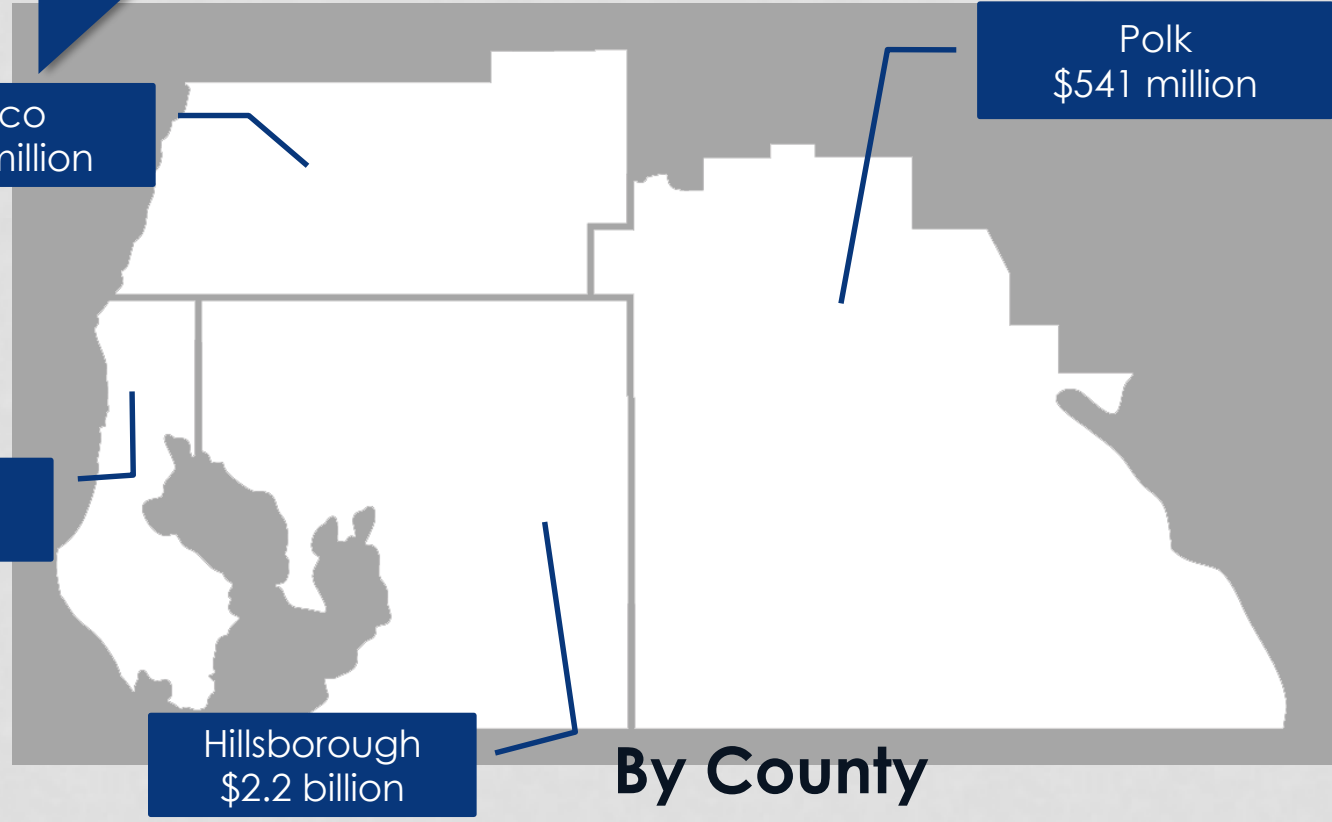


Employees  
**27,600**



**By Division**

- Hospitals
- BMG
- Ambulatory
- Patient Care and Support Services



**By County**

# COMMUNITY BENEFIT - \$391 MILLION IN 2017

Medicaid/Income-Based Programs – Underinsured patients with some insurance but not enough to cover their medical bills

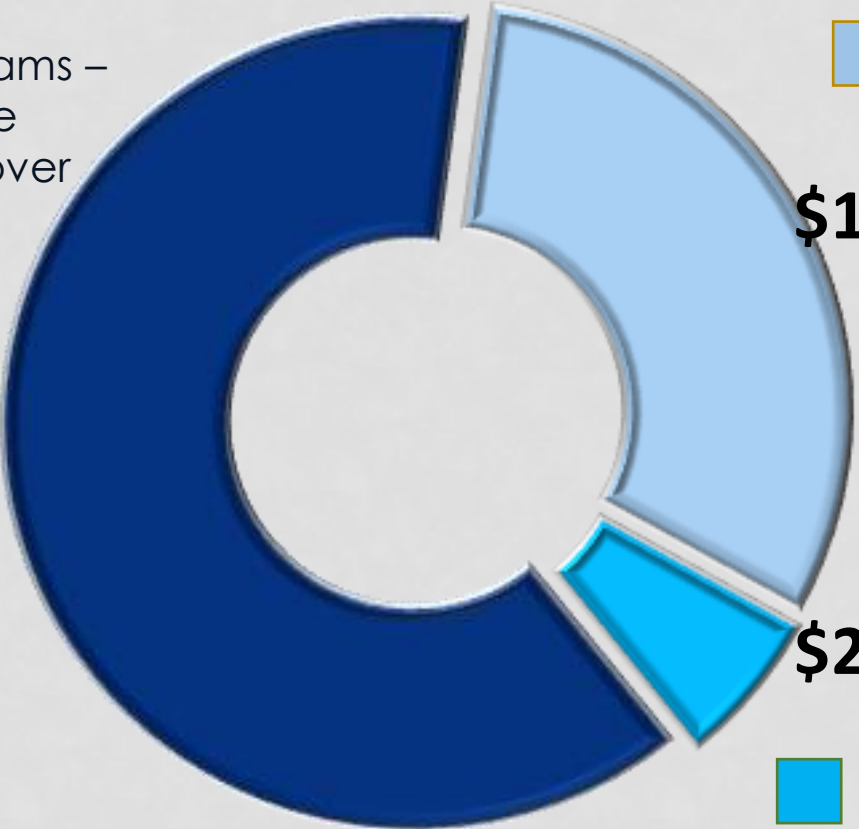
Charity Care – Underinsured and uninsured patients with no insurance

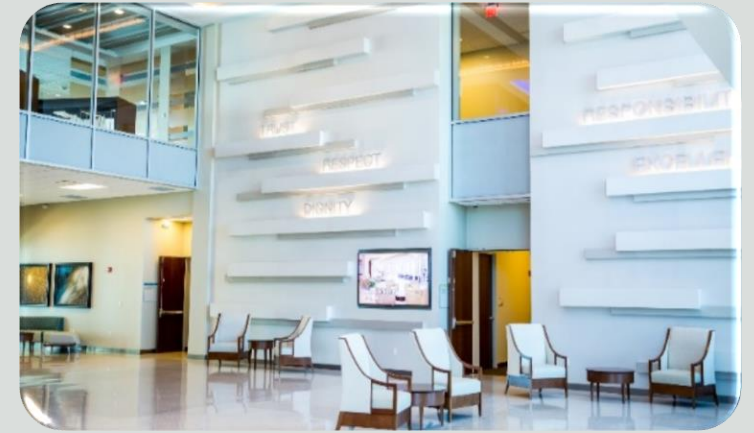
**\$246,000,000**

**\$121,000,000**

**\$24,000,000**

Unbilled Community Services – Health professional education, community health services, cash and contributions to community groups





# Mission

Improve the health of all we serve through community-owned services that set the standard for high-quality, compassionate care.

# Vision

BayCare is an extraordinary team leading the way to high-quality care and personalized, customer-centered health.

# Values

The values of BayCare are trust, respect, and dignity, and reflect our responsibility to achieve health care excellence.



# RECOGNITIONS



2018 Fortune 100  
Best Companies To  
Work For



2017 Best  
Workplaces Great  
Place To Work For  
Millennials



2017 Best  
Workplaces Great  
Place To Work In  
Health Care



2017 Best  
Workplaces Great  
Place To Work For  
Women



2017 *Tampa Bay  
Times* Top Work  
Places



World At Work 2017  
Seal of Distinction



2017 Becker's  
Hospital Review 150  
Great Places To  
Work



2017 Training Top  
125